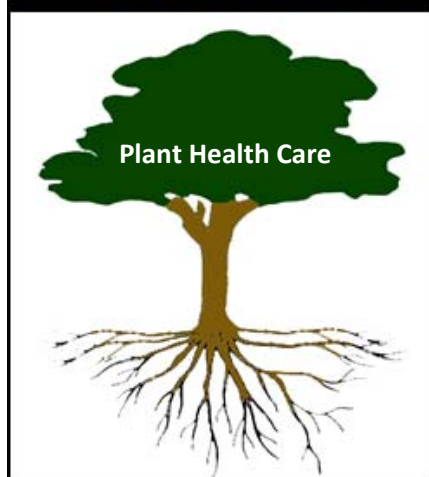


## Science in Harmony with Nature



## Plant Healthcare Program (PHC)

### Plant Healthcare

Plant healthcare means maintaining and improving landscape appearance, vitality and safety for long term beauty, shade, and other benefits through cost-effective, environmentally sound practices and treatments. It requires a solid partnership between property owners and their arborists.

### Plant Healthcare Vs. Tree Healthcare

The care of each plant impacts every other plant on a property because tree, grass, shrub, and plant roots intermingle and compete for water and nutrients.

PHC is a proactive and holistic approach to managing tree and shrub healthcare that focuses on individual plants and their environment. Arborists tailor a program based on landscape size and diversity and property owner goals.

### The Importance of Diagnostic Tree Care

Trees become susceptible to insect or disease infestation when stressed from other causes. It is more effective to maintain proper tree vitality by correcting problems before they become serious than to attempt to cure or maintain a tree when it is in decline. The most common reason for calls to the Total Tree Care contact center is a property owner's concern that something is wrong with a tree. Complex problems may require long term treatments or removal. If an arborist had been consulted earlier, perhaps the problem could have been prevented.

Diagnostic analysis complements visual inspection for revealing the cause of a problem especially when identifying fungi, monitoring insect stage and population, excavation to gather root samples, and climbing to gather bark or foliage samples from the canopy.

Total Tree Care collaborates with diagnostic labs for sample testing and with other landscape service providers to ensure that coordinated treatments will benefit all plants on a property.

[Click Here to learn about Total Tree Care's DTC Diagnostic Tree Care.](#)